

See pg 114 & See - B-8-46  
A-55-171

B-15-109

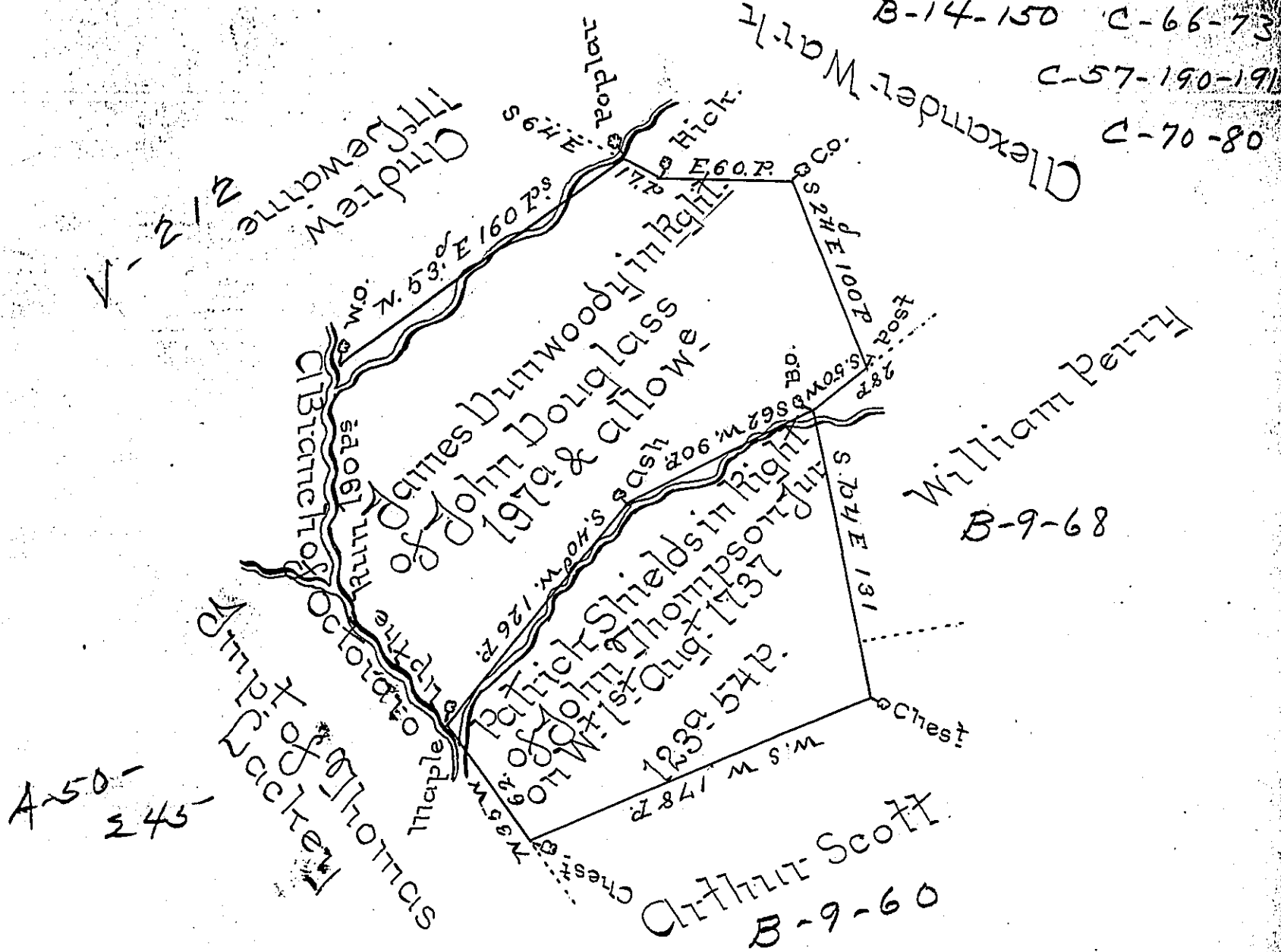
B-14-150

115

C-70-80

C-57-190-191

C-66-73



By Virtue of a Warrant Dated the 2<sup>nd</sup> Day of 1<sup>mo</sup> 1734  
 Surveyed on the 8<sup>th</sup> Day of the 1<sup>st</sup> mo 1735 unto James Dun-  
 woody in Right of John Douglass the above described  
 Tract of Land, Situate in Sadsbury Township in the  
 County of Lancaster

197<sup>a</sup> on W<sup>st</sup> to J<sup>no</sup> Douglass 2<sup>d</sup> Dec<sup>r</sup> 1734

123 54<sup>ps</sup> on W<sup>st</sup> to J<sup>no</sup> Thompson 1<sup>st</sup> Aug<sup>r</sup> 1737

Total 320.54

P Sam<sup>l</sup> Lightfoot

IN TESTIMONY that the above is a copy of the original remaining on file in  
 the Department of Internal Affairs of Pennsylvania, made  
 conformably to an Act of Assembly approved the 16th day of  
 February, 1833, I have hereunto set my Hand and caused  
 the Seal of said Department to be affixed at Harrisburg,  
 this fourth day of July 1899.



*James W. Latta*  
 Secretary of Internal Affairs.